

4th Interim Meeting of the Regional expert Advisory Working Group (REAWG) on LEADER

“Standing up for LEADER”

National Road Map Kosovo*

14 October 2020
Mihone Kerolli Mustafa

Supported by:

Introduction

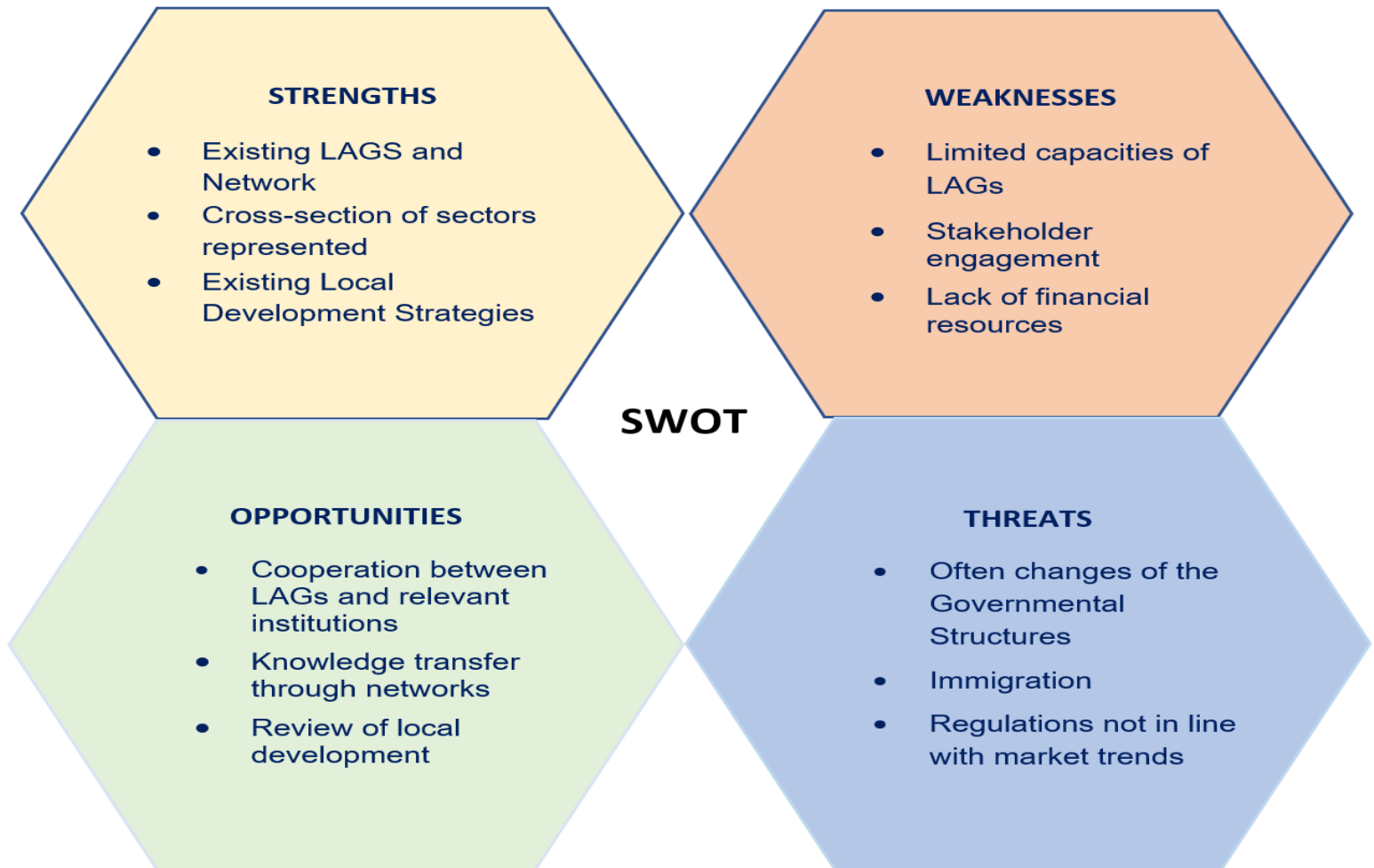


- The rural development strategy promotes sustainable development in Kosovo's rural areas addressing economic, social and environmental concerns.
- Over 62 % of Kosovo's population lives in rural areas and the application of Leader in line with EU rural development policy represents an important and innovative approach.
- The implementation of the LEADER programme in Kosovo is addressed through the following strategic policy documents: 1) strategies for agriculture and rural development, 2) mid-term programmes, 3) IPARD II programmes and 4) strategic and other documents on local development strategy.

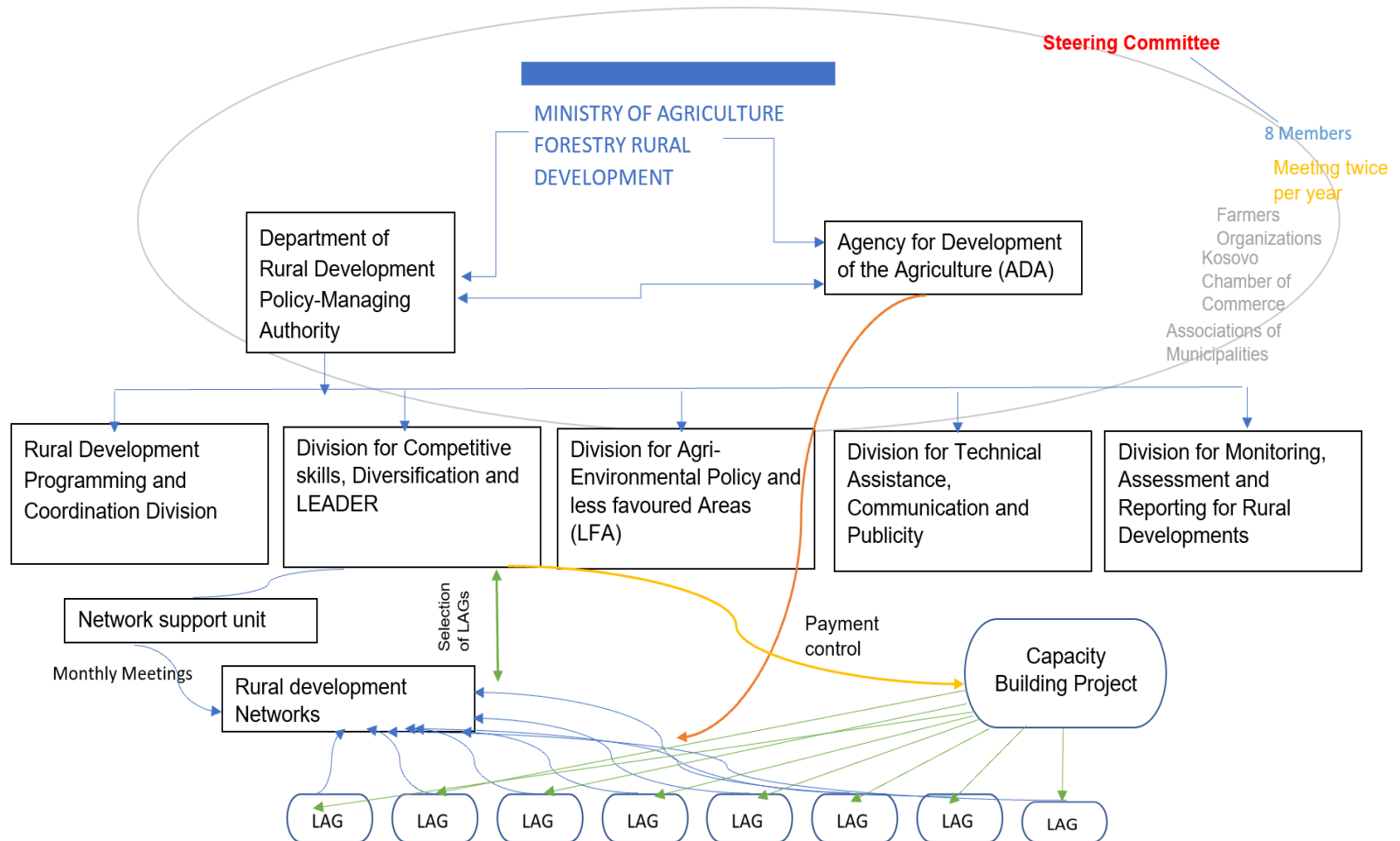
Supported by:



SWOT Analysis of LEADER



Steering Structure



Core Processes: Managing Authorities



- IPARD preparation, certification and implementation
- Call for proposals, check the eligibility and select the LAGs
- Commissioning and supervising the Network Support Unit
- Funding (budgeting, disbursement, control)
- Monitoring and evaluation
- Reporting
- Information and Publicity



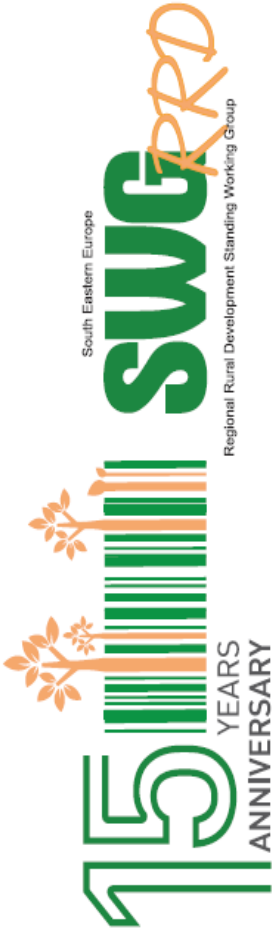
Supported by:



Core Processes: Rural Development Network



- Capacity building of rural stakeholders and LAGs
- National, regional, international networking
- Evaluation and Learning



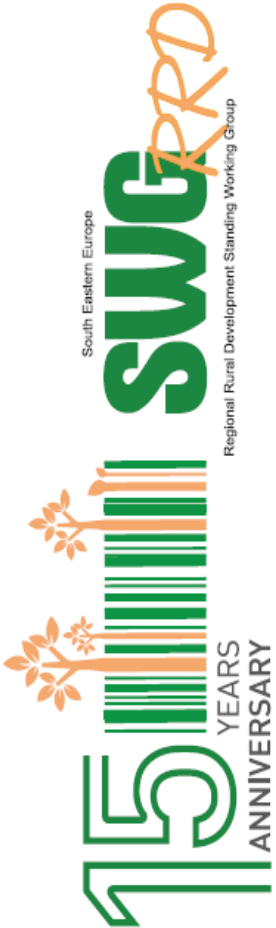
Supported by:



Core Processes: LAGs



- Creating and managing the local partnership
- Local animation and capacity building
- Project support and project management



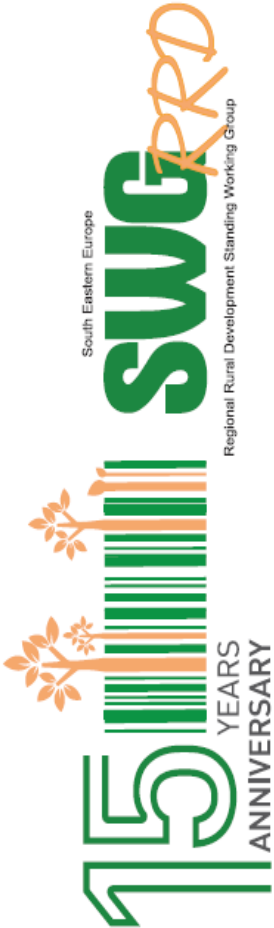
Supported by:



Priorities: Managing Authorities



- Implementation of Local Development Strategies - Leader Approach (ARDP, donor support schemes);
- To stimulate knowledge transfer and help promote social and economic inclusion by supporting LAGs and farmers in rural areas;
- Informing and training local people to prepare and implement local development strategies including the management of their LAGs.



Supported by:



Priorities: Rural Development Network



- Promoting cooperation among LAGs in Kosovo and international cooperation;
- Activating the involvement of various groups of rural stakeholders and building/strengthening sustainable partnerships through the existing Local Action Groups (LAGs);
- To develop civil society and social dialogue within the rural population, facilitate good governance through local partnerships and foster employment and develop human capital.



Supported by:

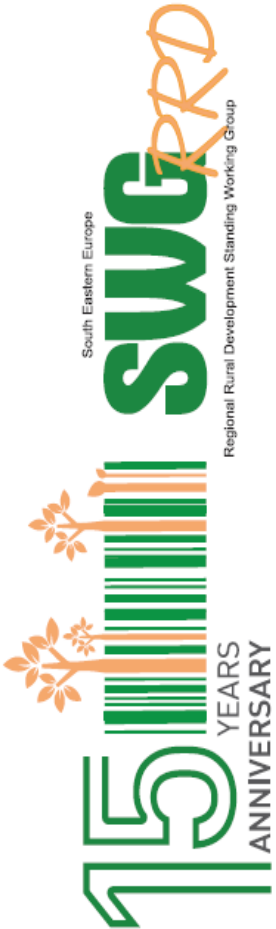


giz Deutsche Gesellschaft
für Internationale
Zusammenarbeit (GIZ) GmbH

Priorities: Priorities: LAGs



- Participate in the decision-making and contribute to the develop human capital to increase the ability to cope with competitive pressure and market forces as well as to improve the life in rural areas;
- Participate in the national rural development network;
- Ensure adequate levels of technical and economic knowledge and skills in LAG management, product quality and safety and market skills.



Supported by:



Road Map

MA

- LDS are further supported through the funding of viable, community-led projects

- RD Strategies are further promoted through local initiatives and private public partnership

- The capacity among rural inhabitants and LAG members is enhanced through training and education

RDN

- New partnerships established

- The effectiveness and sustainability of LAGs in the target municipalities are enhanced through capacity development and

- The participation of rural inhabitants, LAGs, other stakeholders are improved in the decision-making process of rural development

LAGs

- The capacity among rural inhabitants and LAG members is enhanced through training and education

- Secured effective project management

- Encourage other inhabitants to be activated in the process of cooperation through meetings and other forums

Thank you!

Supported by:

